

The NISE logo consists of the word "NISE" in white, uppercase, serif font, centered within a dark blue square.

NISE

The fwo logo features the lowercase letters "fwo" in a stylized, multi-colored font (blue, orange, green, and black).

fwo Research Foundation
Flanders
Opening new horizons

The University of Antwerp logo features a stylized "U" in red and blue, followed by the text "University of Antwerp" in blue and red.

University
of Antwerp

DIANE

Digital Infrastructure for the Analysis of
National movements in Europe

Nel de Mûelenaere

What is DIANE?

Digital Infrastructure for the Analysis of National movements in Europe

DIANE is an online research environment where researchers, students and archivists can



connect,
exchange,
compare &
analyse data

on national and regional movements in Europe

How does DIANE fit in NISE?



NISE

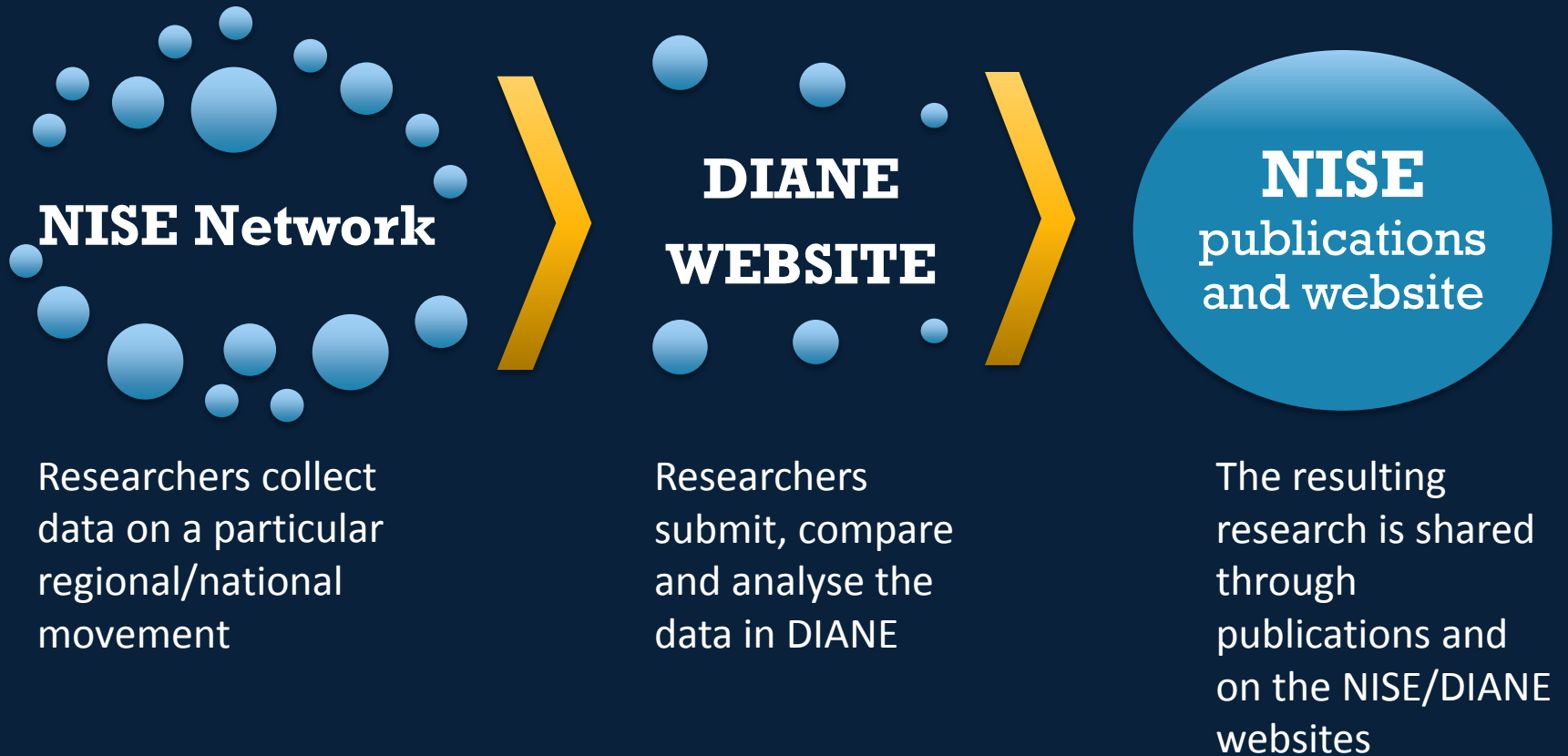
NATIONAL MOVEMENTS &
INTERMEDIARY STRUCTURES IN EUROPE

Academic network of 28 researchers and 47 cultural heritage institutions from 27 European countries

Mission:

Connecting European researchers, universities and cultural heritage institutions, facilitating knowledge sharing, and stimulating transnational and comparative research on national and regional movements.

The NISE data-flow

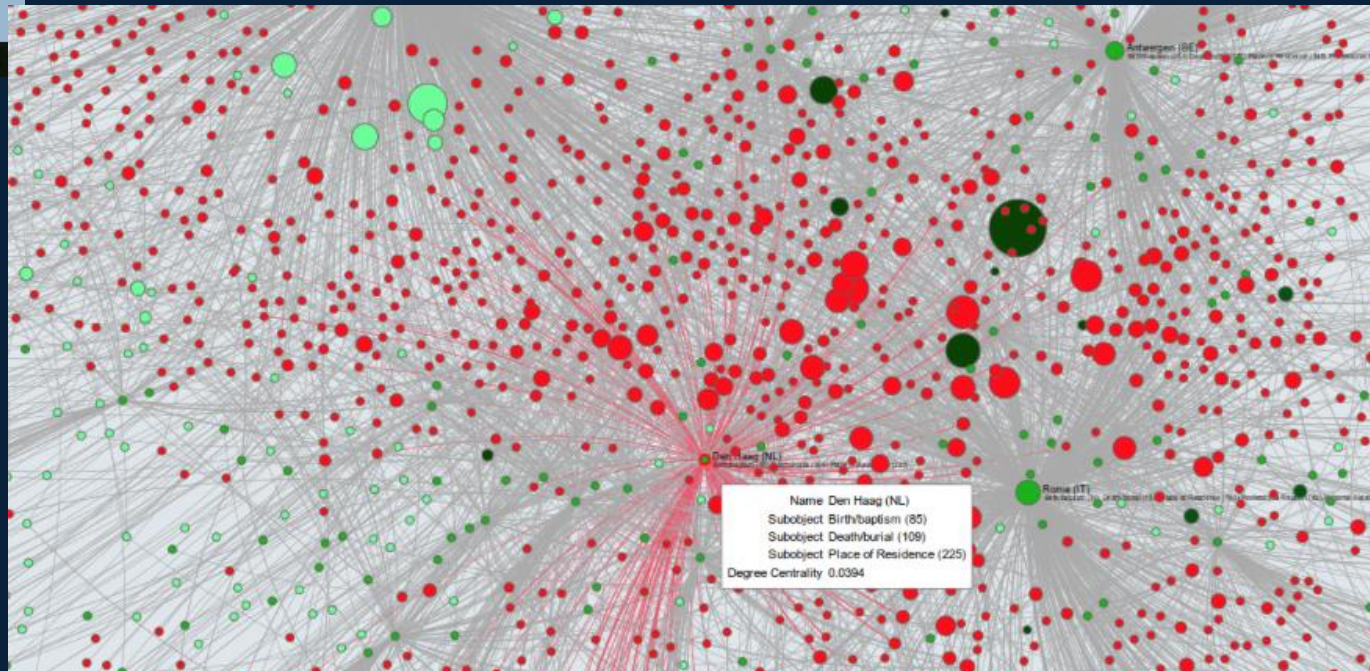


Technology?



Nodegoat is a
web-based data
management, network
analysis and
visualisation
environment,
developed by Lab 1100

Social network visualisations



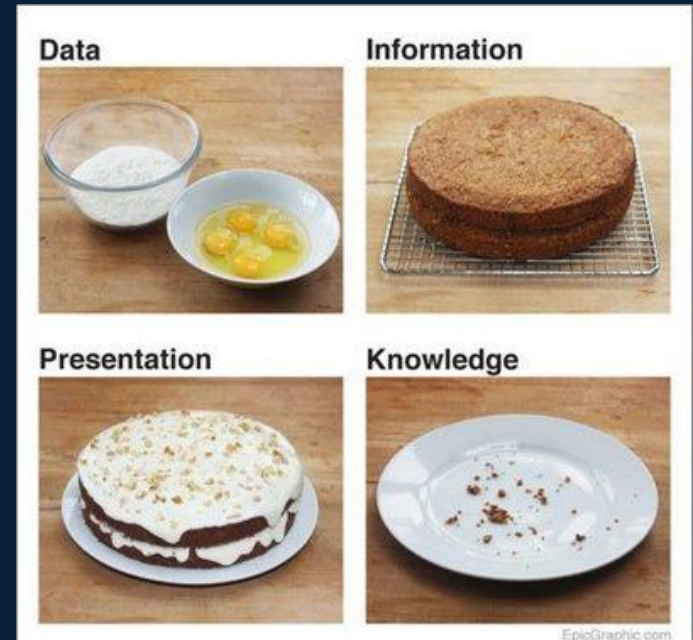
What are the goals of DIANE?

What are the goals of DIANE?

Connecting researchers & institutions and facilitating international research collaborations

Stimulating digital transnational and comparative exploration of national & regional movements in Europe

Making research results available for researchers, students & educators



Project Strategy for the next year



Stage 1: Design and preparation July-December 2015

2015

2016

SEP

OCT

NOV

DEC

JAN

FEB

MAR

APR

MAY

JUNE

JULY

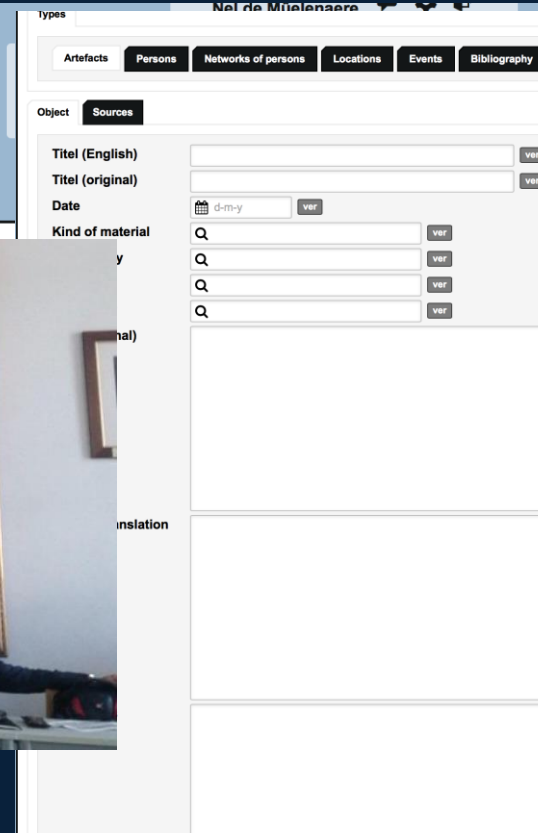
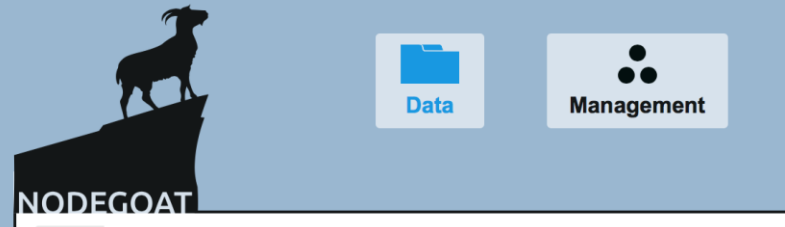
AUG

SEP

Stage 1: Design & planning

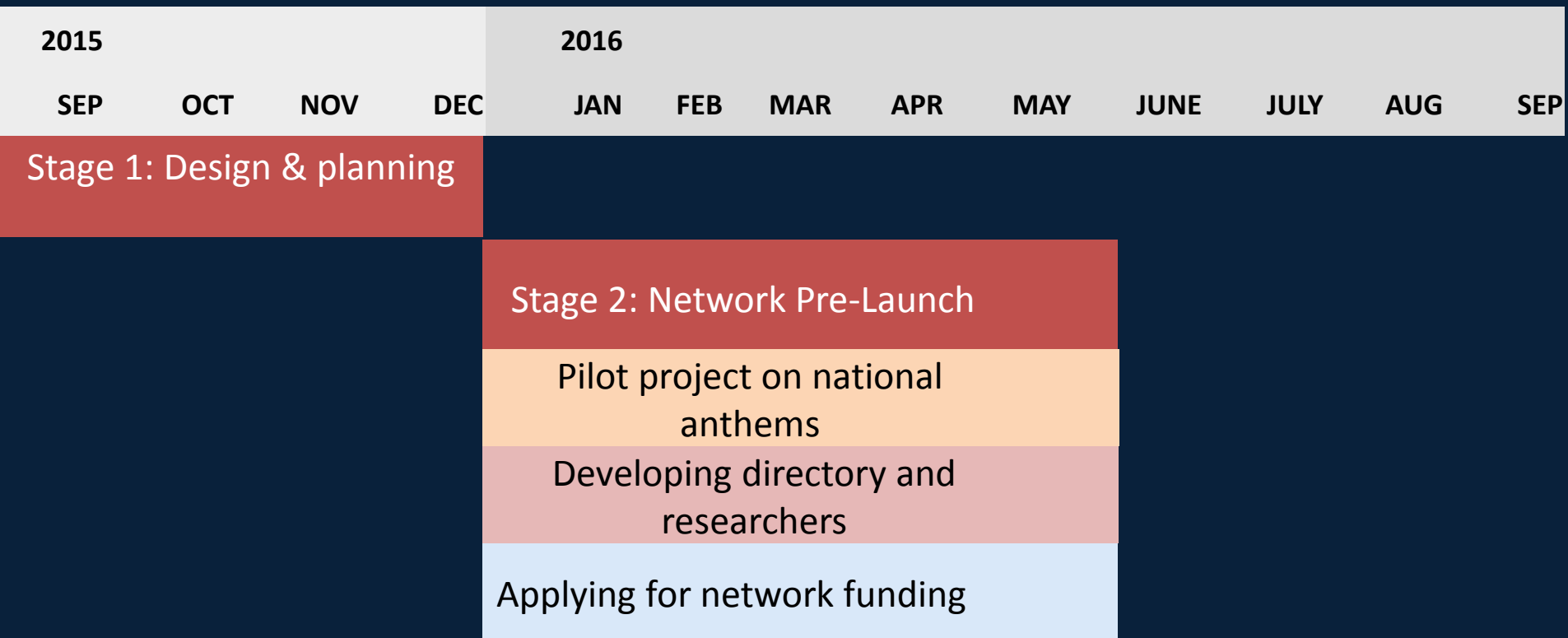
Research planning and
strategy

Designing the infrastructure



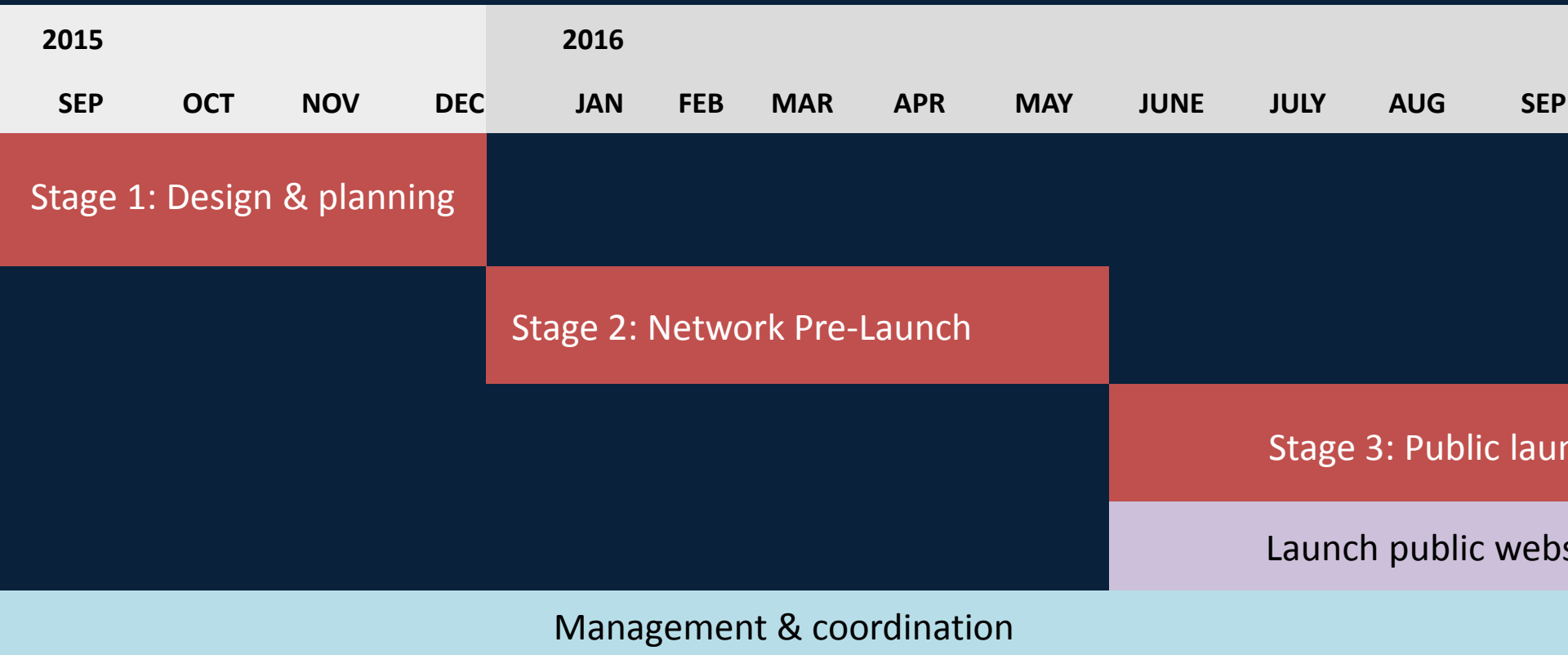
Stage 2: Network pre-launch

December 2015 - May 2016



Stage 3: Public launch

May – November 2016



Project planning

2015

2016

SEP

OCT

NOV

DEC

JAN

FEB

MAR

APR

MAY

JUNE

JULY

AUG

SEP

Stage 1: Design & planning

Stage 2: Network Pre-Launch

Stage 3: Public launch

designing the
infrastructure

research planning and strategy

setting up a pilot project

developing directory and
researchers

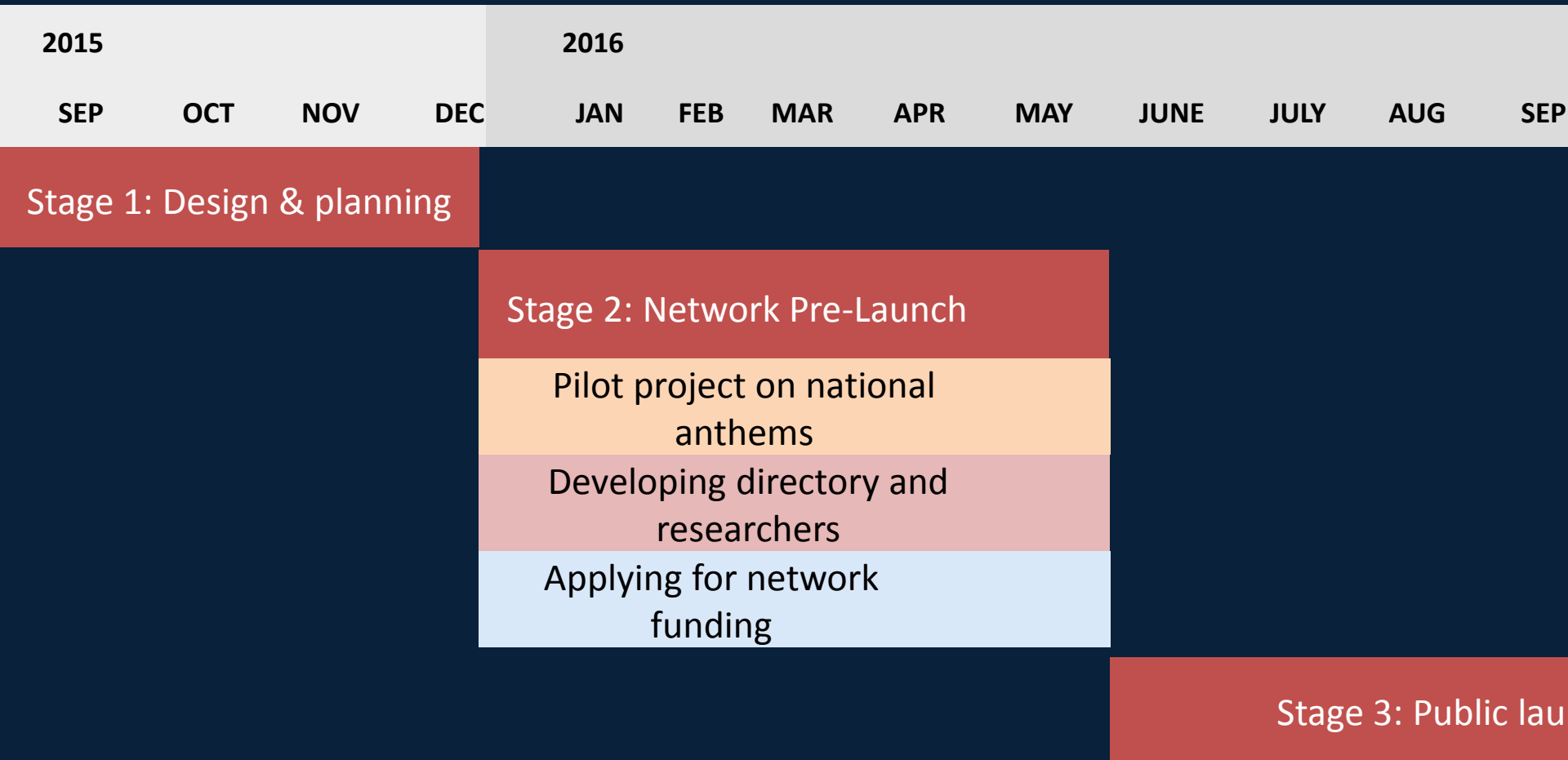
applying for network
funding

building & launch public website

management & coordination

Stage 2: Network pre-launch

December 2015 - May 2016



Stage 2

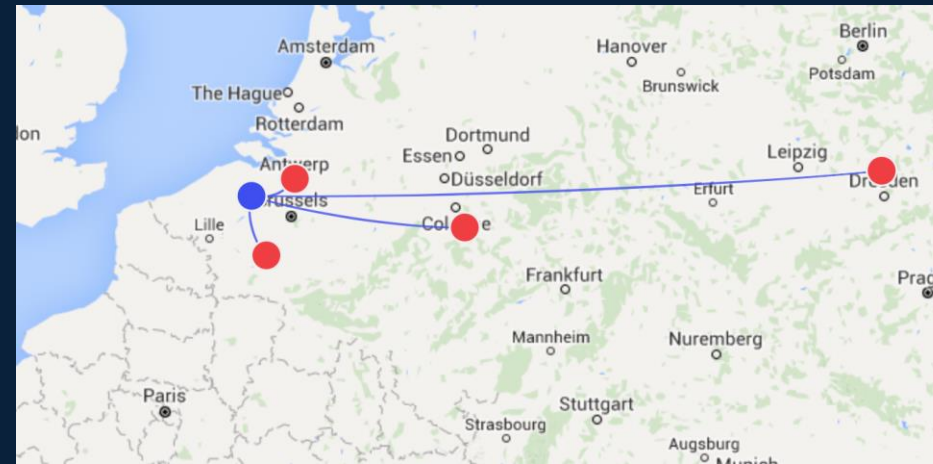
Pilot project: National Anthems

Research objective:

Exploring the trans-, inter, infra- and intranational transfers of agents and ideas in the making of the anthems

Trial and error:

1. Motivating the network to enter data
2. Applying for funding
3. Monitoring the entered data
4. Showcasing the results



Thank you!



DIANE

Digital Infrastructure for the Analysis of
National movements in Europe

Nel de Mûelenaere

